



Promontory June Newsletter

June 2025

Principal's Message

With the arrival of June, we find ourselves in the final stretch of the school year—just 19 school days remain! This is a wonderful time to **"close out the year with heart, purpose, and pride"** and make the most of every opportunity ahead. Students are encouraged to give the very best right up to the final bell of school year!


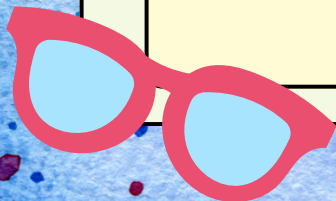
June is a vibrant and exciting month at our school. Classrooms are buzzing with the completion of engaging learning units, end-of-year assessments, field trips that explore our beautiful neighborhood and community, and culminating activities that highlight the incredible growth students have made this year.

To our students: **let's finish the year with pride.** Bring your best effort each day, enjoy these final weeks, and celebrate everything you've learned and accomplished.

Last Friday, our dedicated staff came together to review student progress and celebrate the many successes from this school year. We were also incredibly grateful to be recognized and appreciated by our parent community. **On behalf of the entire staff, thank you** to our mighty PAC for spoiling us with a tasty lunch on Friday and for your ongoing support, generosity, and partnership. It truly means the world to us.

Let's make these final weeks meaningful and memorable!

~Ms. Kass





Promontory June Newsletter

June 2025

Front Parking Lot

As we work together to keep our school a safe and welcoming place for all, I'd like to take a moment to remind everyone about a few important parking and traffic guidelines.


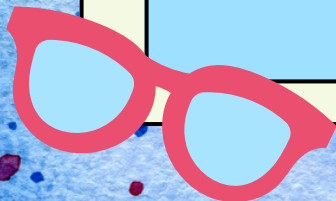
Please remember to **park only in designated areas** and keep the **drive-through lane completely clear**, especially near **walkways and entrances**, including respecting the no parking zones as indicated by posted sign or cones.

The drive-through lane is intended strictly for moving traffic – **not for stopping, dropping off, or picking up passengers.**

This ensures that traffic flows smoothly and, most importantly, that our students remain safe during arrival and dismissal times.

Reminder to walk using the sidewalks and not crossing through the parking lot.

We kindly ask for your partnership in following these procedures. Your cooperation makes a significant difference in maintaining a safe and efficient environment for our school community. It also models for students proper parking lot and road safety practices and procedures.



=SUMMER=



Promontory June Newsletter

June 2025

Volunteer Tea

On Monday, our staff had the pleasure of celebrating the incredible contributions of our dedicated volunteers at our Volunteer Appreciation Tea. It was a heartfelt opportunity to express our sincere gratitude to all those who have generously given their time, energy, and care to support our school community throughout the year.

Your support makes a meaningful difference in the lives of our students and staff. Whether helping in classrooms, organizing events, or lending a hand behind the scenes, your efforts truly matter—and they do not go unnoticed.

From all of us at Promontory Elementary, **Thank You** for being such an important part of our school family. We are deeply grateful for your partnership and unwavering commitment





Promontory June Newsletter

June 2025

Moving?

If your family is planning to move out of the school catchment area before September, we kindly ask that you notify the school office as soon as possible.

As many of you know, our school is currently operating at full capacity. Accurate enrolment numbers are essential for planning class placements and staffing for the upcoming school year. While students will remain enrolled at our school until they are officially registered and accepted at a new school, early notice of any potential changes greatly helps both our school and the district prepare effectively. We appreciate your support and partnership as we plan for a successful year ahead.



PROMONTORY WEEKLY CALENDAR

Dates: June 9 -13, 2025

**Monday
June 9**

Scholastic Book Fair

- The scholastic book fair begins today!
- Please see below class schedules and parent buying times if you'd like to come check it out for yourself.



**Wednesday
June 11**

Track Mini Meet #2

- 3:30pm @ SSS Track
- students in gr. 3-5 only
- Parents are responsible for transportation to/from

Forbes/Shields @ Stave Lake

- Reminder to Pay the \$10 fee online (SD33 Quickpay)
- Please return all permission forms & dress for the weather.



**Thursday
June 12**

Williams/Fisher @ Stave Lake

- Reminder to Pay the \$10 fee online (SD33 Quickpay)
- Please return all permission forms & dress for the weather.

Scholastic Book Fair

- The last day of the book fair
- Book Fair Closed at 2:00pm.



**Friday
June 13**

Camp Squeah

- Grade 5's Only
- Bus Leaves at 8:45am and returns to Promontory at 6:00pm
- Please pay the \$20 fee online (SD33 Quickpay) and submit permission forms.

Play Abby.

- Kindergarten Classes
- 8:45-12:00pm

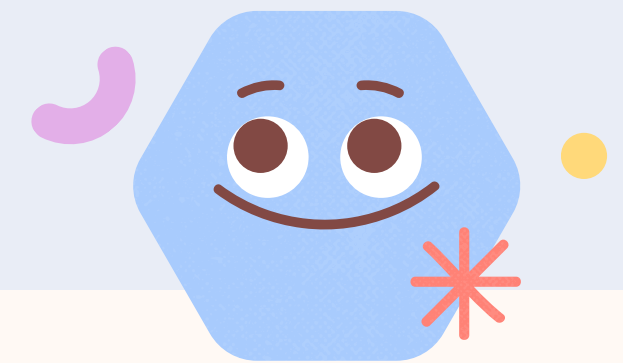
Fun Day!!

- Gr. 1-4 Classes



**Upcoming
Dates:**

- June 19 - District Track Meet
- June 24 - Cultus Lake Waterslides (Gr. 2-5)
- June 25 - Pierson/Winter @ Cheam Spray Park
- June 25 - Gr. 5 Farewell Assembly (11:00am)
- June 26 - Last Day of School. Dismissal @ 11:25



PICK UP

YOUR

Newfeld Farms

Orders

JUNE 11

@ 4:00PM



Scholastic **BOOK FAIR**



Please see below the class
schedule for our bookfair and
shopping times!



**Monday, June 9
to
Thursday, June 12**

Book Fair Schedule:

Time	Monday Classes JUNE 9	Tuesday Classes JUNE 10	Wednesday Classes JUNE 11	Thursday Classes JUNE 12
------	-----------------------------	-------------------------------	---------------------------------	--------------------------------

Before School: CLOSED

8:25 -8:50	PARENT & Drop In SHOPPING	PARENT & Drop In SHOPPING	PARENT & Drop In SHOPPING	PARENT & Drop In SHOPPING
8:50-9:15	Fisher	Williams	PETTIFER	MACISAAC
9:15-9:40	Schmietenknop	Davidson	S.JOHNSTON	ERICKSON
9:40-10:25	Hardy	Buck	INGHAM	CAPLETTE
Recess	Closed	Closed	Closed	Closed
10:40- 11:20	Gentile	Flex time: Krahn	Knezo	Closed
11:20-11:50	Forbes	Flex time: Krahn	Ferris	PETERSON
11:50-12:20	Shields	CLOSED	CLOSED	WOUDA
Lunch	Closed	Closed	Closed	Closed
1:05-1:35	Plummer	WINTER	Steegstra (Pierson)	ALSIP
1:35-2:00	Alfred	Armstrong	MURLEY	BANNERMAN
2:00-2:23	PARENT SHOPPING	PARENT SHOPPING	PARENT SHOPPING	BOOK FAIRCLOSSES

After School: CLOSED

JUNE TWEEN NIGHTS

Fridays, 6:30pm-9:00pm @ Promontory Heights Elementary School

Open to ALL STUDENTS in grades 4-5

\$5 entrance fee per student

(Concession items at additional cost)

June 6th

**Get your singing voices ready, it's
karaoke night! Come join us for tunes
and a dodgeball game in the gym!**



June 13th

Kid's Theme Choice!!

**Time to go for a trip, It's tourist night!
Get on your best floral patterned
shirts and join us for snow cones and a
scavenger hunt.**

June 20th

**It's the last Tween Night of the year!
Let's end it off with an end of the
year Tween Night awards night and
pizza! See you there!**



NEW IMPORTANT INFORMATION - TWEEN NIGHT PRE-REGISTRATION
**Parents of ALL participants MUST complete a one time registration
package before attending Tween Night.**

**Contact the PHECSA office by phone or email for a registration
package.**



Phone: 604-858-2999

Fax: 604-824-5925

EMAIL: phecsa@phecsa.ca

WEBSITE: www.phecsa.ca